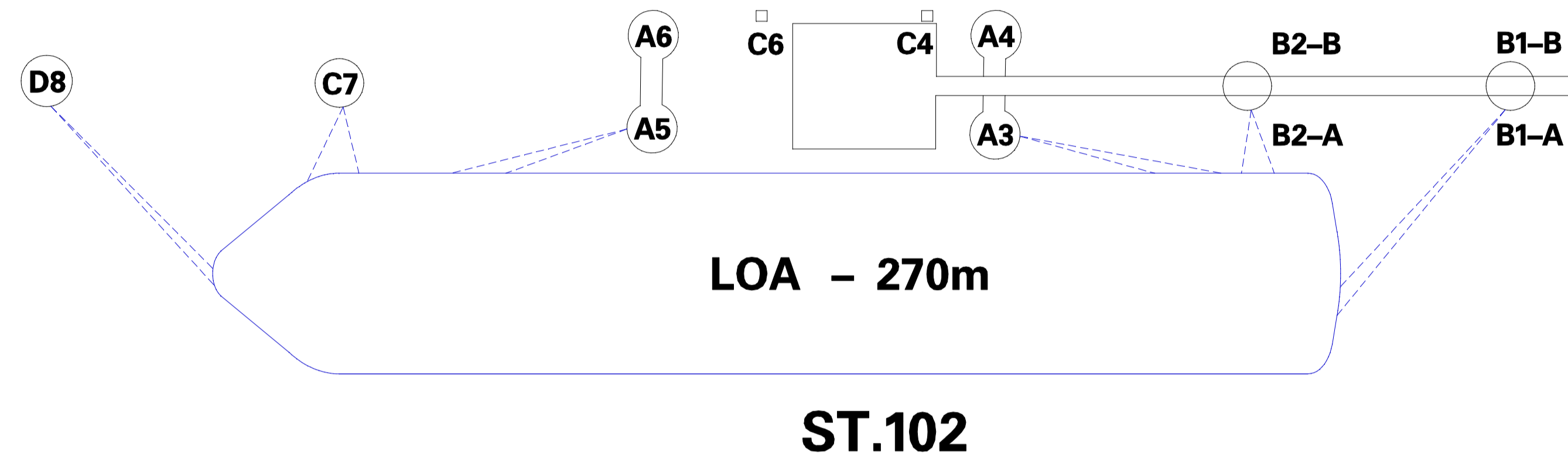


**MOORING PLAN JETTY 102
120,000 DWT VESSEL**

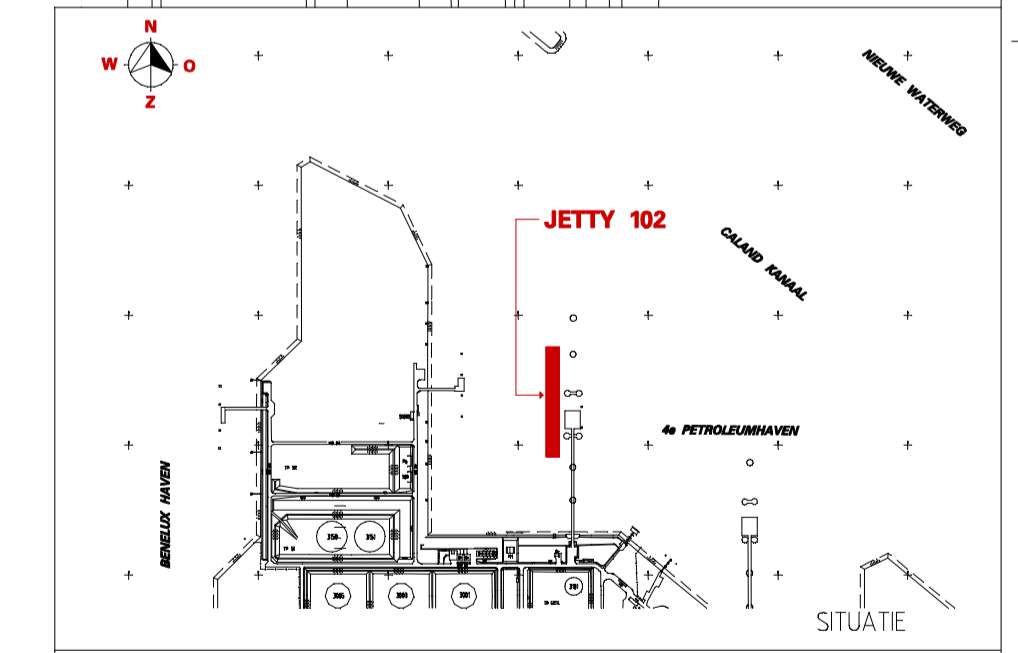
| BOLLARD | BOLLARD CAPACITY | TYPE LINE |
|---------|------------------|------------|
| D8 | 2x 100 ton | BOWLINE |
| C7 | 2x 60 ton | BOWLINE |
| A5 | 2x 100 ton | SPRINGLINE |
| A3 | 2x 100 ton | SPRINGLINE |
| B2-A | 2x 60 ton | STERNLINE |
| B1-A | 2x 60 ton | STERNLINE |

- NOTES:
- MAX. 1 LINE PER QUICK RELEASE HOOK
 - NO MORE THAN 2 LINES PER BOLLARD
 - MINIMUM MOORING REQUIREMENTS:
 - SHIPS < 10,000 DWT: 2 HEAD- AND STERNLINES, 2 SPRINGLINES FWD AND AFT
 - SHIPS < 25,000 DWT: 3 HEAD- AND STERNLINES, 2 SPRINGLINES FWD AND AFT
 - SHIPS > 25,000 DWT: 4 HEAD- AND STERNLINES, 2 SPRINGLINES FWD AND AFT



4e PETROLEUMHAVEN

CALAND KANAAL



| REV. | DATE | DESCRIPTION | BUREAU | AUT. |
|------|------------|-------------------------------------|--------|------|
| B | 19-08-2019 | BOLLARD CAPACITY A3 en A5 AANGEPAST | DMS | 746 |
| A | 01-08-2016 | OPNIEUW GETEKEND | DMS | 746 |

For symbols and identification systems: RE: ...; AFS: ROM; ...
 Scale: 1:200
 SHEET 1 of 1
R 0866324
 Shell Nederland Raff./Chemie b.v.