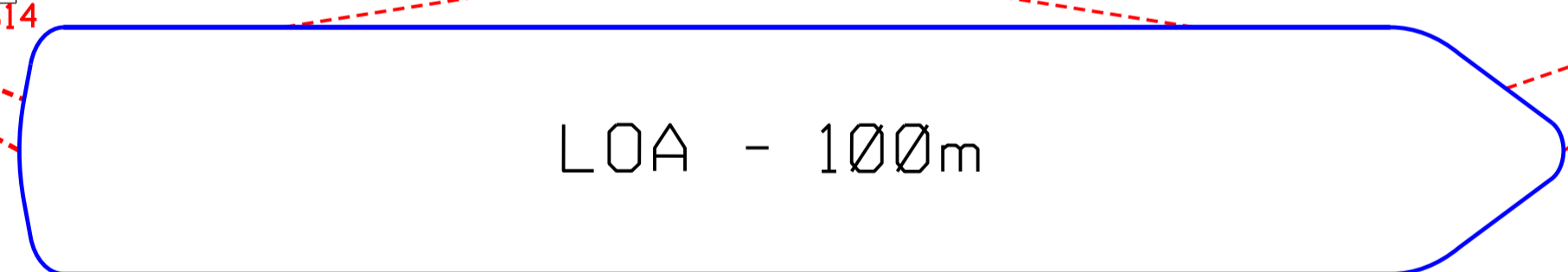


JETTY 5

JETTY 4



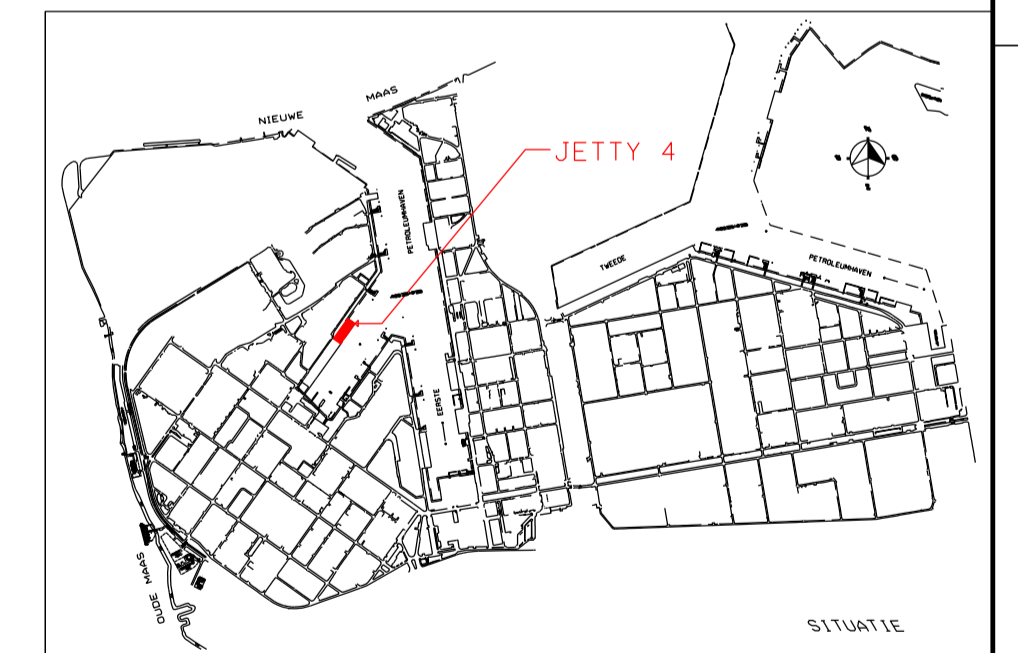
MOORING PLAN JETTY 4  
 <10,000 SDWT VESSELS

BOLLARD	BOLLARD CAPACITY	TYPE LINE
4-B01	550 KN	BOWLINE
4-B02	550 KN	BOWLINE
4-B03	550 KN	BOWLINE
4-B04	550 KN	BOWLINE
4-B05	500 KN	SPRINGLINE
4-B06	500 KN	SPRINGLINE
4-B07	500 KN	SPRINGLINE
4-B08	500 KN	SPRINGLINE
4-B09	500 KN	SPRINGLINE
4-B10	500 KN	SPRINGLINE
4-B11	500 KN	SPRINGLINE
4-B12	500 KN	SPRINGLINE
4-B13	500 KN	STERN-SPRING
4-B14-4-B15	500 KN	SPRINGLINE
4-B16	500 KN	STERN-SPRING
4-B17	500 KN	SPRINGLINE
4-B18	500 KN	SPRINGLINE

EERSTE PETROLEUMHAVEN

NOTES:

- NO MIXED MOORING
- NO MORE THAN 2 LINES PER BOLLARD
- MINIMUM MOORING REQUIREMENTS:
  - SHIPS 10.000 DWT: 2 HEAD- AND STERNLINES, 2 SPRINGLINES FWD AND AFT
  - SHIPS 25.000 DWT: 3 HEAD- AND STERNLINES, 2 SPRINGLINES FWD AND AFT
  - SHIPS 35.000 DWT: 4 HEAD- AND STERNLINES, 2 SPRINGLINES FWD AND AFT



NO.	DATE	REVISION/PLAN	BY	CHECKED
F	10-05-2022	CONVERMERKT		
E	01-08-2016	OPNIEUW GETEKEND		
PLAN	CITY	SCALE	A1	
MOORING PLAN JETTY 4				
FOR VESSELS OF 100M LENGTH				
PROJECT: 01-04152000		SHEET: 1 OF 1		
DRAWING: 01-04152000-01		NO. 0721970		
Shell Nederland Raff. / Chemie b.v.				