

NOTES:

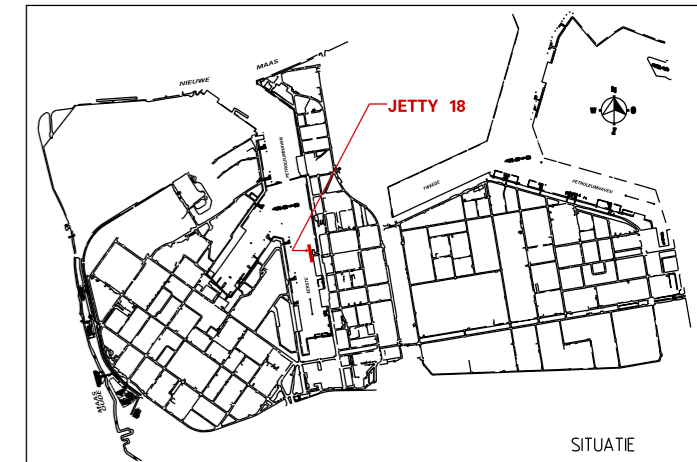
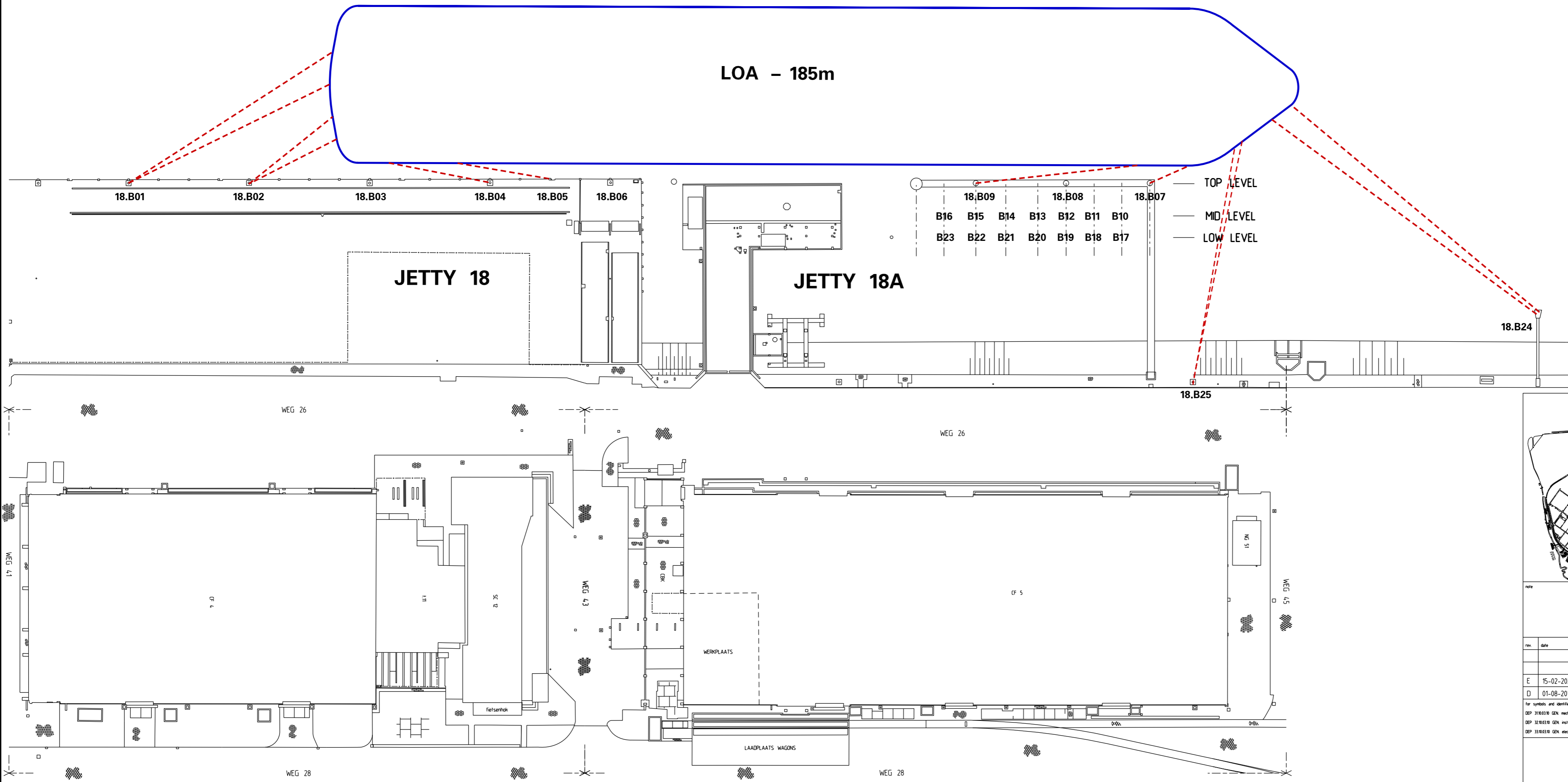
- NO MIXED MOORING
- NO MORE THAN 2 LINES PER BOLLARD
- MINIMUM MOORING REQUIREMENTS:
 - SHIPS UPTO 10,000 DWT: 2 HEAD- AND STERNLINES, 2 SPRINGLINES FWD AND AFT
 - SHIPS UPTO 25,000 DWT: 3 HEAD- AND STERNLINES, 2 SPRINGLINES FWD AND AFT
 - SHIPS OVER 25,000 DWT: 4 HEAD- AND STERNLINES, 2 SPRINGLINES FWD AND AFT

**MOORING PLAN JETTY 18
> 25,000 SDWT VESSELS**

BOLLARD	BOLLARD CAPACITY	TYPE LINE
18-B01	500 kN	STERNLINE
18-B02	500 kN	STERNLINE
18-B03	500 kN	SPRINGLINE
18-B04	500 kN	SPRINGLINE
18-B05	500 kN	SPRINGLINE
18-B06	500 kN	SPRINGLINE
18-B07	1000 kN	SPRINGLINE
18-B08	1000 kN	SPRINGLINE
18-B09	1000 kN	SPRINGLINE
18-B10-16	500 kN	
18-B17-23	300 kN	
18-B24	900 kN	BOWLINE
18-B25	400 kN	BOWLINE

EERSTE PETROLEUMHAVEN

LOA - 185m



note

rev.	date	description	by	APD
E	15-02-2022	COMMENT DMS/7427 VERWERKT	DMS	748
D	01-08-2016	OPNIEUW GETEKEND	DMS	746

for symbols and identification systems

DEP 3180310 GEN mechanical	plan	CFD	SCALE	A1
DEP 3280310 GEN instrumentation	unit	100		
DEP 3380310 GEN electrical	val	E01a-E03s	subg 15	

**MOORING PLAN JETTY 18A
FOR VESSELS OF 185m LENGTH**

reference drawing R-04.15000 SHEET 1 of 1 REVISION

drawing R 0721959 E

Shell Nederland Raff./Chemie b.v.