

NOTES:

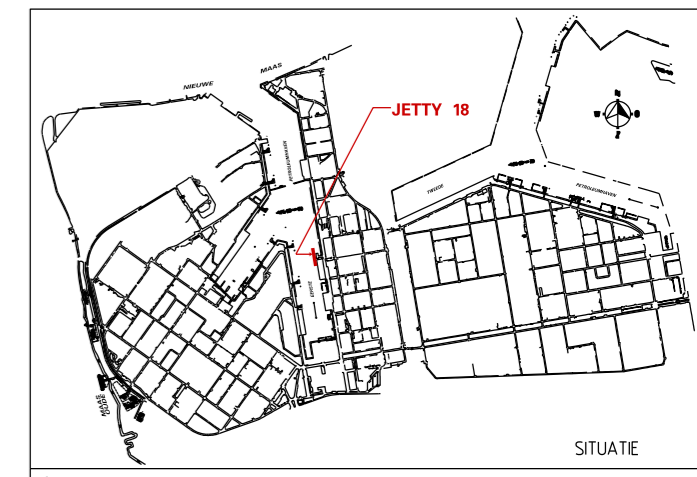
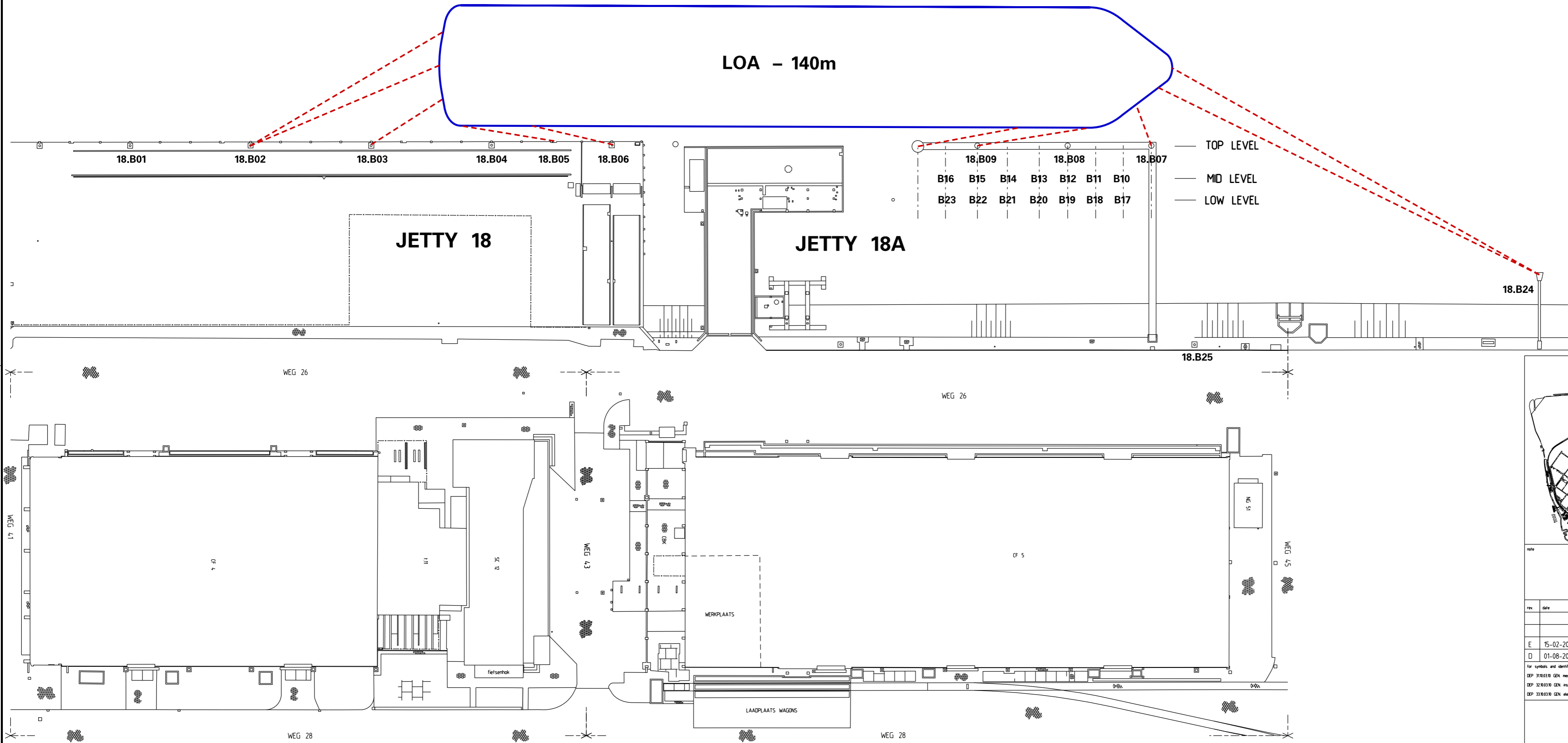
- NO MIXED MOORING
- NO MORE THAN 2 LINES PER BOLLARD
- MINIMUM MOORING REQUIREMENTS:
 - SHIPS UP TO 10,000 DWT: 2 HEAD- AND STERNLINES, 2 SPRINGLINES FWD AND AFT
 - SHIPS UP TO 25,000 DWT: 3 HEAD- AND STERNLINES, 2 SPRINGLINES FWD AND AFT
 - SHIPS OVER 25,000 DWT: 4 HEAD- AND STERNLINES, 2 SPRINGLINES FWD AND AFT

**MOORING PLAN JETTY 18
10 - 25,000 SDWT VESSELS**

| BOLLARD | BOLLARD CAPACITY | TYPE LINE |
|-----------|------------------|------------|
| 18-B01 | 500 kN | STERNLINE |
| 18-B02 | 500 kN | STERNLINE |
| 18-B03 | 500 kN | STERNLINE |
| 18-B04 | 500 kN | SPRINGLINE |
| 18-B05 | 500 kN | SPRINGLINE |
| 18-B06 | 500 kN | SPRINGLINE |
| 18-B07 | 1000 kN | BOWLINE |
| 18-B08 | 1000 kN | STERNLINE |
| 18-B09 | 1000 kN | STERNLINE |
| 18-B10-16 | 500 kN | |
| 18-B17-23 | 300 kN | |
| 18-B24 | 900 kN | BOWLINE |
| 18-B25 | 400 kN | BOWLINE |

EERSTE PETROLEUMHAVEN

LOA - 140m



| rev. | date | description | bureau | AFD |
|------|------------|---------------------------|--------|-----|
| E | 15-02-2022 | COMMENT DMS/7427 VERWERKT | DMS | 748 |
| D | 01-08-2016 | OPNIEUW GETEKEND | DMS | 746 |

**MOORING PLAN JETTY 18A
FOR VESSELS OF 140m LENGTH**

reference: drawing R-04.15000

drawing: SHEET 1 of 1

revision: R 0721958 E

Shell Nederland Raff./Chemie b.v.