

NOTES:

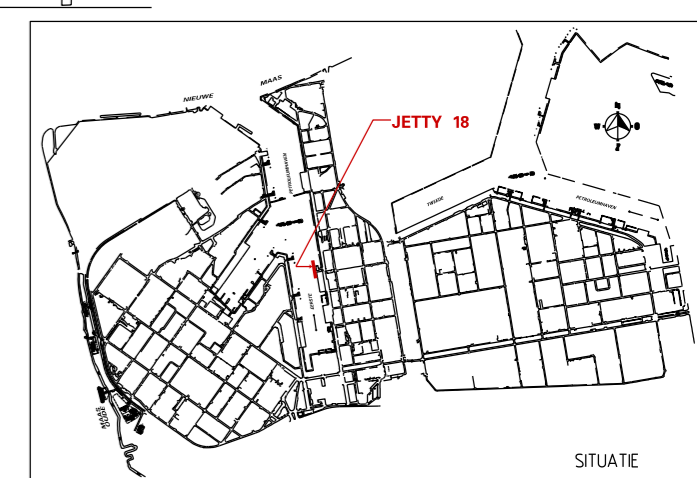
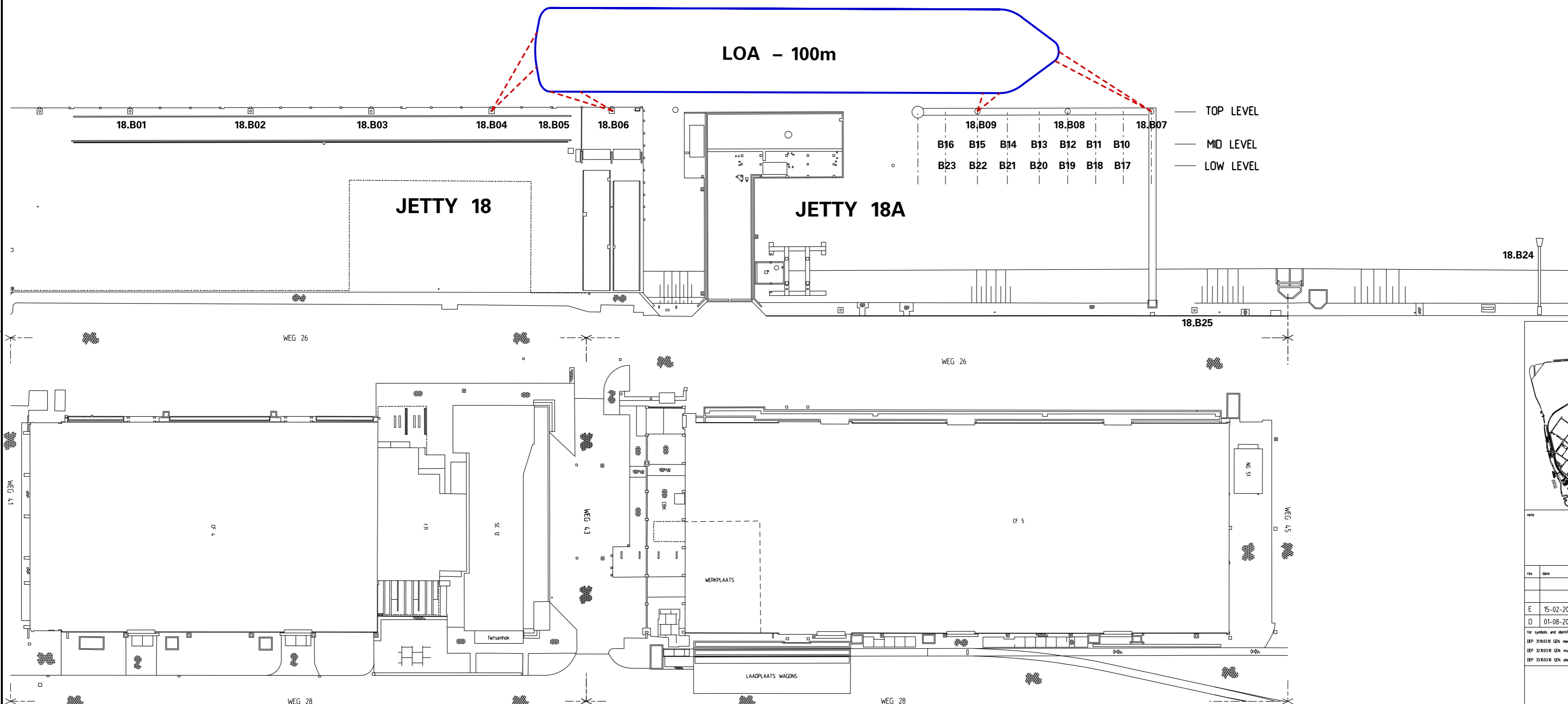
- NO MIXED MOORING
- NO MORE THAN 2 LINES PER BOLLARD
- MINIMUM MOORING REQUIREMENTS:
 - SHIPS UP TO 10,000 DWT: 2 HEAD- AND STERNLINES, 2 SPRINGLINES FWD AND AFT
 - SHIPS UP TO 25,000 DWT: 3 HEAD- AND STERNLINES, 2 SPRINGLINES FWD AND AFT
 - SHIPS OVER 25,000 DWT: 4 HEAD- AND STERNLINES, 2 SPRINGLINES FWD AND AFT

**MOORING PLAN JETTY 18
<10,000 SDWT VESSELS**

BOLLARD	BOLLARD CAPACITY	TYPE LINE
18-B01	500 kN	STERNLINE
18-B02	500 kN	STERNLINE
18-B03	500 kN	STERNLINE
18-B04	500 kN	STERNLINE
18-B05	500 kN	STERNLINE
18-B06	500 kN	SPRINGLINE
18-B07	1000 kN	BOWLINE
18-B08	1000 kN	BOWLINE
18-B09	1000 kN	SPRINGLINE
18-B10-16	500 kN	
18-B17-23	300 kN	
18-B24	900 kN	BOWLINE
18-B25	400 kN	BOWLINE

EERSTE PETROLEUMHAVEN

LOA - 100m



rev.	date	description	bureau	AFD
E	15-02-2022	COMMENT DMS/7427 VERWERKT	DMS	748
D	01-08-2016	OPNIEUW GETEKEND	DMS	746

for symbols and identification systems

PE -	afk. CVP	soort tekening
DEP 318030 GEN. mechanical	plant	CFD
DEP 318030 GEN. instrumentation	line	1000
DEP 318030 GEN. electrical	vak	E01w-E03s subgr 15

**MOORING PLAN JETTY 18A
FOR VESSELS OF 100m LENGTH**

reference: drawing: R-04.15000 SHEET 1 of 1

drawing: **R 0721957** E

Shell Nederland Raff./Chemie b.v.