

**NOTES:**

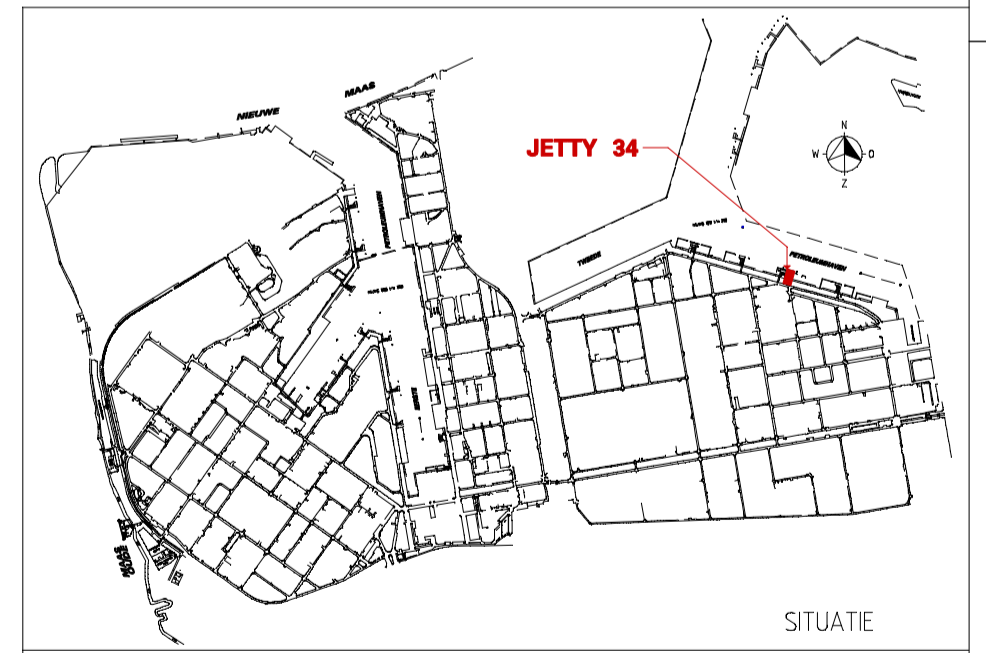
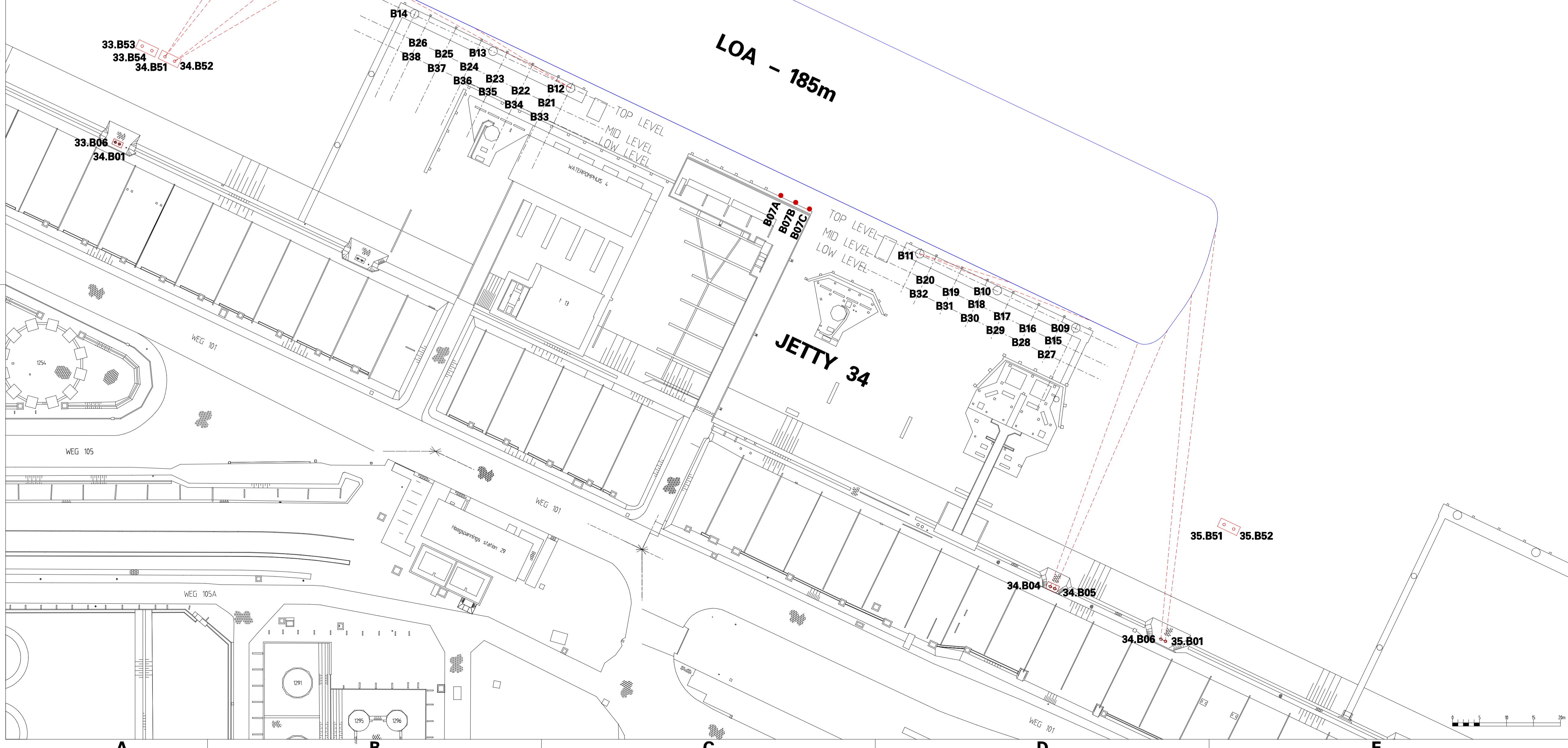
- NO MIXED MOORING
- NO MORE THAN 2 LINES PER BOLLARD
- MINIMUM MOORING REQUIREMENTS:
  - SHIPS < 10,000 DWT: 2 HEAD- AND STERNLINES, 2 SPRINGLINES FWD AND AFT
  - SHIPS < 25,000 DWT: 3 HEAD- AND STERNLINES, 2 SPRINGLINES FWD AND AFT
  - SHIPS > 25,000 DWT: 4 HEAD- AND STERNLINES, 2 SPRINGLINES FWD AND AFT

**MOORING PLAN JETTY 34  
> 25,000 SDWT VESSELS**

BOLLARD	BOLLARD CAPACITY	TYPE LINE
34-B01	550 kN	HEADLINE
34-B04	550 kN	
34-B05	550 kN	
34-B06	550 kN	STERNLINE
34-B07A	200 kN	
34-B07B	200 kN	
34-B07C	200 kN	
34-B09-B14	1000 kN	
34-B15-B26	500 kN	
34-B27-B38	300 kN	
33-B06	550 kN	HEADLINE
35-B01	550 kN	STERNLINE
33-B53	800 kN	
33-B54	800 kN	
34-B51	800 kN	
34-B52	800 kN	
35-B51	800 kN	
35-B52	800 kN	

**TWEEDE PETROLEUMHAVEN**

LOA - 185m



note

rev.	date	description	by	checked	scale	sheet
D	10-09-2019	BOLLER 33B53/54, 34B51/52, 35B51/52 NIEUW	DMS		74.6	
C	01-08-2016	OPNIEUW GETEKEND	DMS		74.6	

for symbols and identification systems  
 DOP 3182318 (EN) mechanical  
 DOP 3182318 (EN) instrumentation  
 DOP 3182318 (EN) electrical

sheet	1	of	1
scale	SCALE	sheet	15
date	17-11-18	scale	15
rev.		scale	15

**MOORING PLAN JETTY 34  
FOR VESSELS OF 185m LENGTH**

drawing	R-OL-15000	sheet	1	of	1	revise
drawing		sheet		of		
drawing		sheet		of		

**R 0721950**

Shell Nederland Raff./Chemie b.v.