

- NOTES:
- NO MIXED MOORING
 - NO MORE THAN 2 LINES PER BOLLARD
 - MINIMUM MOORING REQUIREMENTS:
 - SHIPS < 10,000 DWT: 2 HEAD- AND STERNLINES, 2 SPRINGLINES FWD AND AFT
 - SHIPS < 25,000 DWT: 3 HEAD- AND STERNLINES, 2 SPRINGLINES FWD AND AFT
 - SHIPS > 25,000 DWT: 4 HEAD- AND STERNLINES, 2 SPRINGLINES FWD AND AFT

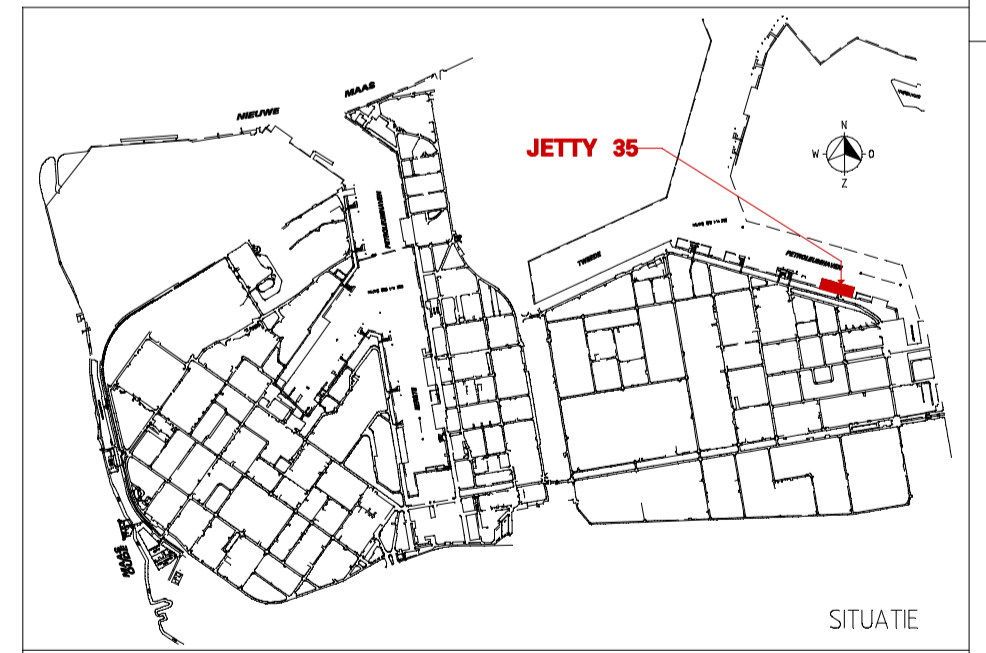
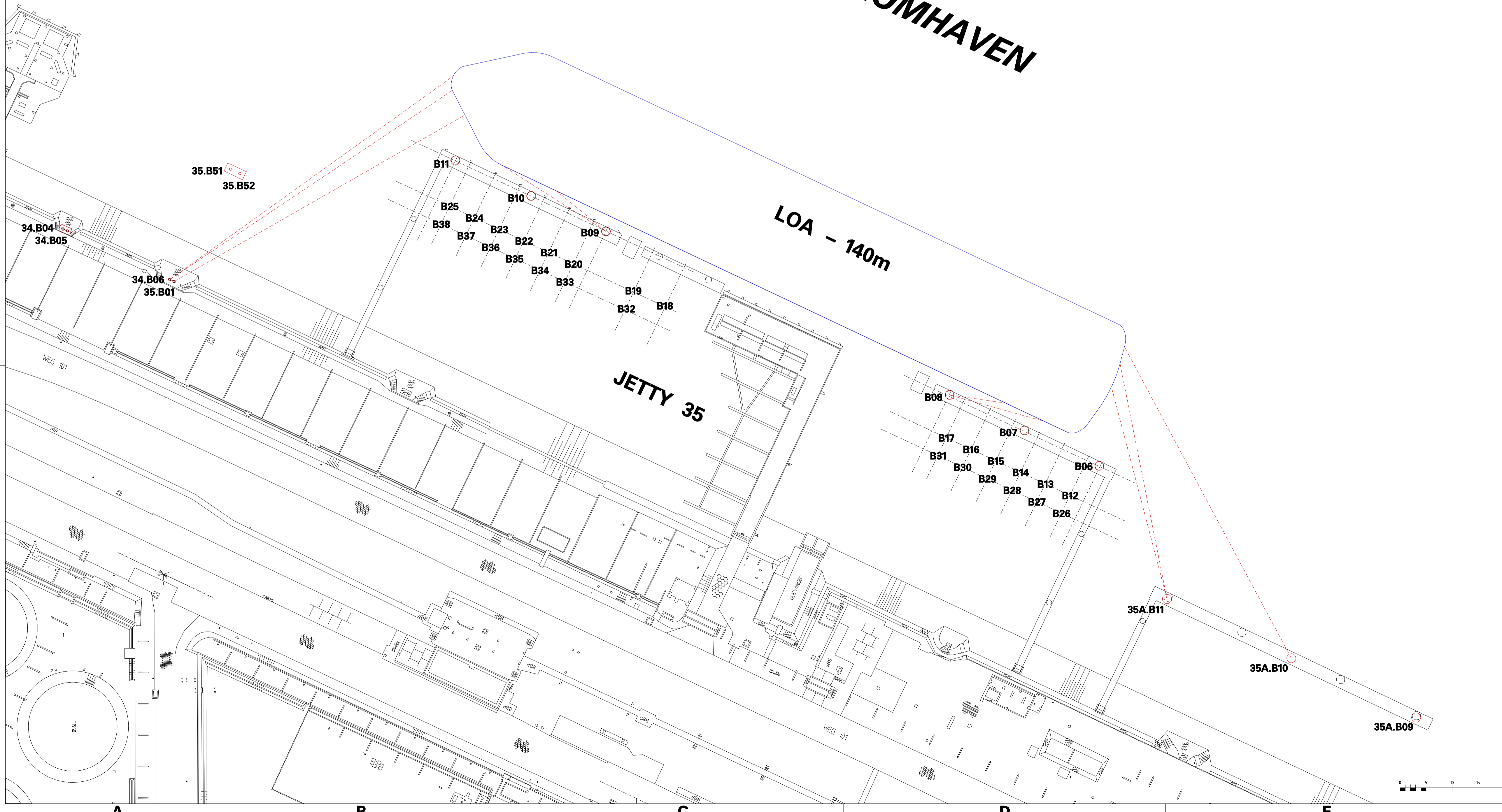
**MOORING PLAN JETTY 35
10 - 25,000 SDWT VESSELS**

BOLLARD	BOLLARD CAPACITY	TYPE LINE
34-B04	550 kN	BOWLINE
34-B05	550 kN	BOWLINE
34-B06	550 kN	BOWLINE
35-B01	550 kN	BOWLINE
35-B06-B11	1000 kN	
35-B12-B25	500 kN	
35-B26-B38	300 kN	
35A-B09	1000 kN	STERNLINE
35A-B10	1000 kN	STERNLINE
35A-B11	1000 kN	STERNLINE

TWEEDE PETROLEUMHAVEN

LOA - 140m

JETTY 35



rev	date	description	bureau	A/D
E	10-09-2019	BOLDERS 35-B51 en 52 NIEUW	DMS	746
D	01-08-2016	OP NIEUW GETEKEND	DMS	746

for symbols and identifications systems
 DOP 3100218 02N: meetniveau
 DOP 3100218 02N: instrumentatie
 DOP 3100218 02N: elektrisch

RE	info	CVP	voort tekening
start	EPD	SCALE	A1
late	1300		
van	NIB-N19	schep	15
		REEL	NR

**MOORING PLAN JETTY 35
FOR VESSELS OF 140m LENGTH**

reference	drawing	R-OL-15000	sheet	1	of	1	REVISE
	drawing						
	drawing						

R 0721947 E

Shell Nederland Raff./Chemie b.v.