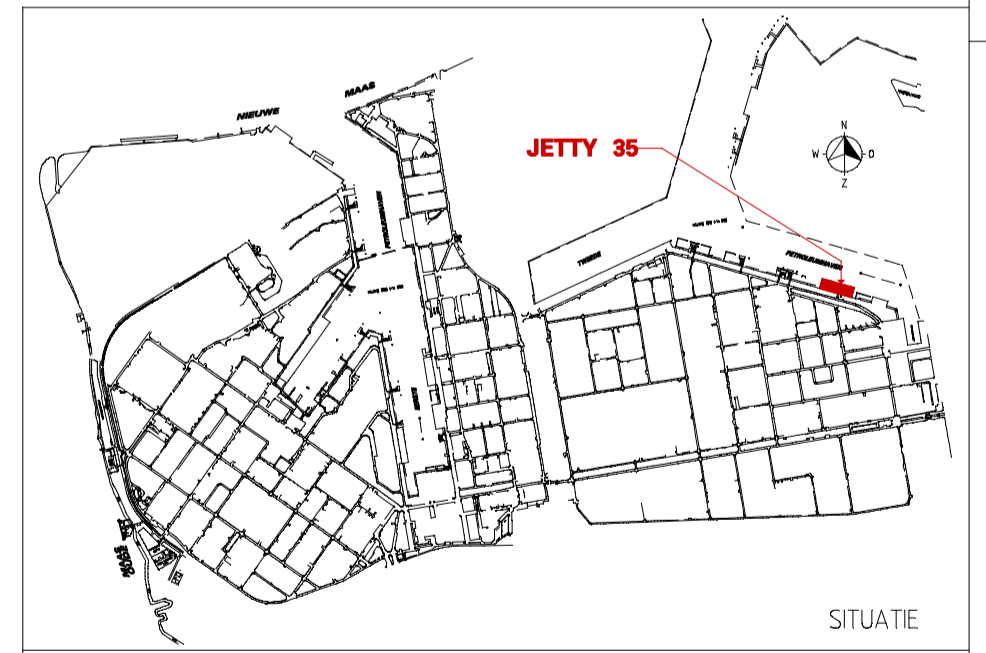
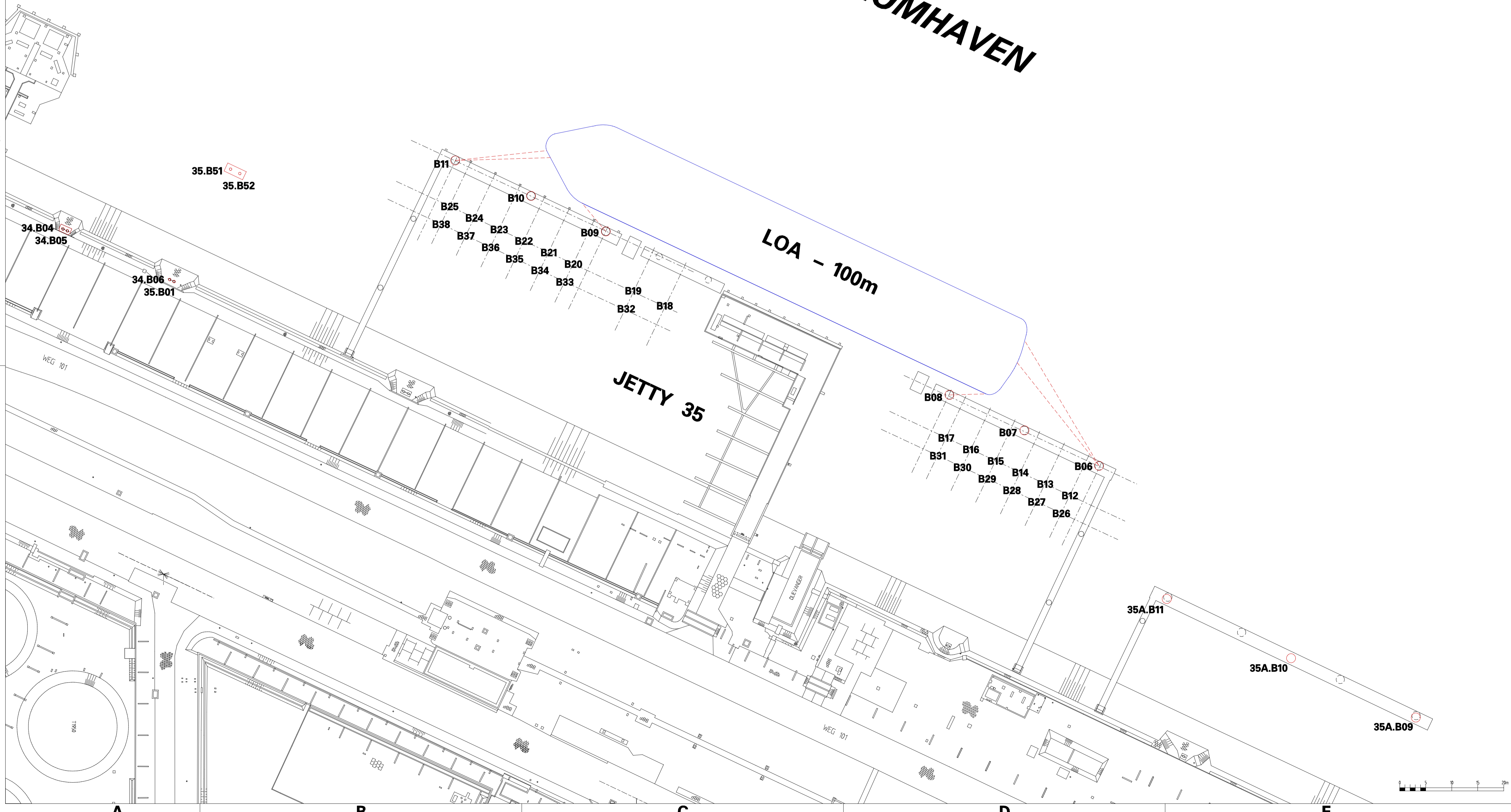


- NOTES:
- NO MIXED MOORING
  - NO MORE THAN 2 LINES PER BOLLARD
  - MINIMUM MOORING REQUIREMENTS:
    - SHIPS < 10,000 DWT: 2 HEAD- AND STERNLINES, 2 SPRINGLINES FWD AND AFT
    - SHIPS < 25,000 DWT: 3 HEAD- AND STERNLINES, 2 SPRINGLINES FWD AND AFT
    - SHIPS > 25,000 DWT: 4 HEAD- AND STERNLINES, 2 SPRINGLINES FWD AND AFT

**MOORING PLAN JETTY 35  
< 10,000 SDWT VESSELS**

BOLLARD	BOLLARD CAPACITY	TYPE LINE
34-B04	550 kN	BOWLINE
34-B05	550 kN	BOWLINE
34-B06	550 kN	BOWLINE
35-B01	550 kN	BOWLINE
35-B06-B11	1000 kN	
35-B12-B25	500 kN	
35-B26-B38	300 kN	
35A-B09	1000 kN	STERNLINE
35A-B10	1000 kN	STERNLINE
35A-B11	1000 kN	STERNLINE

**TWEEDE PETROLEUMHAVEN**



rev. date description bureau A/D

E	10-09-2019	BOLDERS 35-B51 en 52 NIEUW	DMS	746
D	01-08-2016	OP NIEUW GETEKEND	DMS	746

for symbols and identifications systems

IE	date	CVP	voort tekening	formaat
start	EPD	SCALE		A1
date	1300			
nom	NIB-N19	supp	15	REEL. NIB

**MOORING PLAN JETTY 35  
FOR VESSELS OF 100m LENGTH**

reference	drawing	R-OL-15000	SHEET	1	of	1	REVISE
	drawing						E

Shell Nederland Raff./Chemie b.v.