

NOTES:

- NO MIXED MOORING
- NO MORE THAN 2 LINES PER BOLLARD
- MINIMUM MOORING REQUIREMENTS:
 - SHIPS < 10,000 DWT: 2 HEAD- AND STERNLINES, 2 SPRINGLINES FWD AND AFT
 - SHIPS < 25,000 DWT: 3 HEAD- AND STERNLINES, 2 SPRINGLINES FWD AND AFT
 - SHIPS > 25,000 DWT: 4 HEAD- AND STERNLINES, 2 SPRINGLINES FWD AND AFT

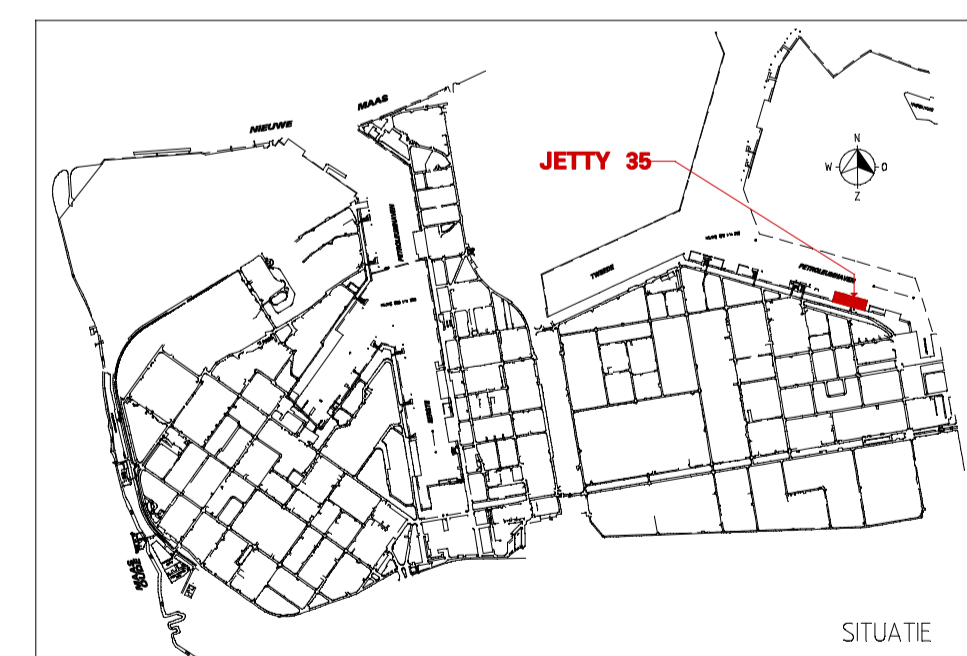
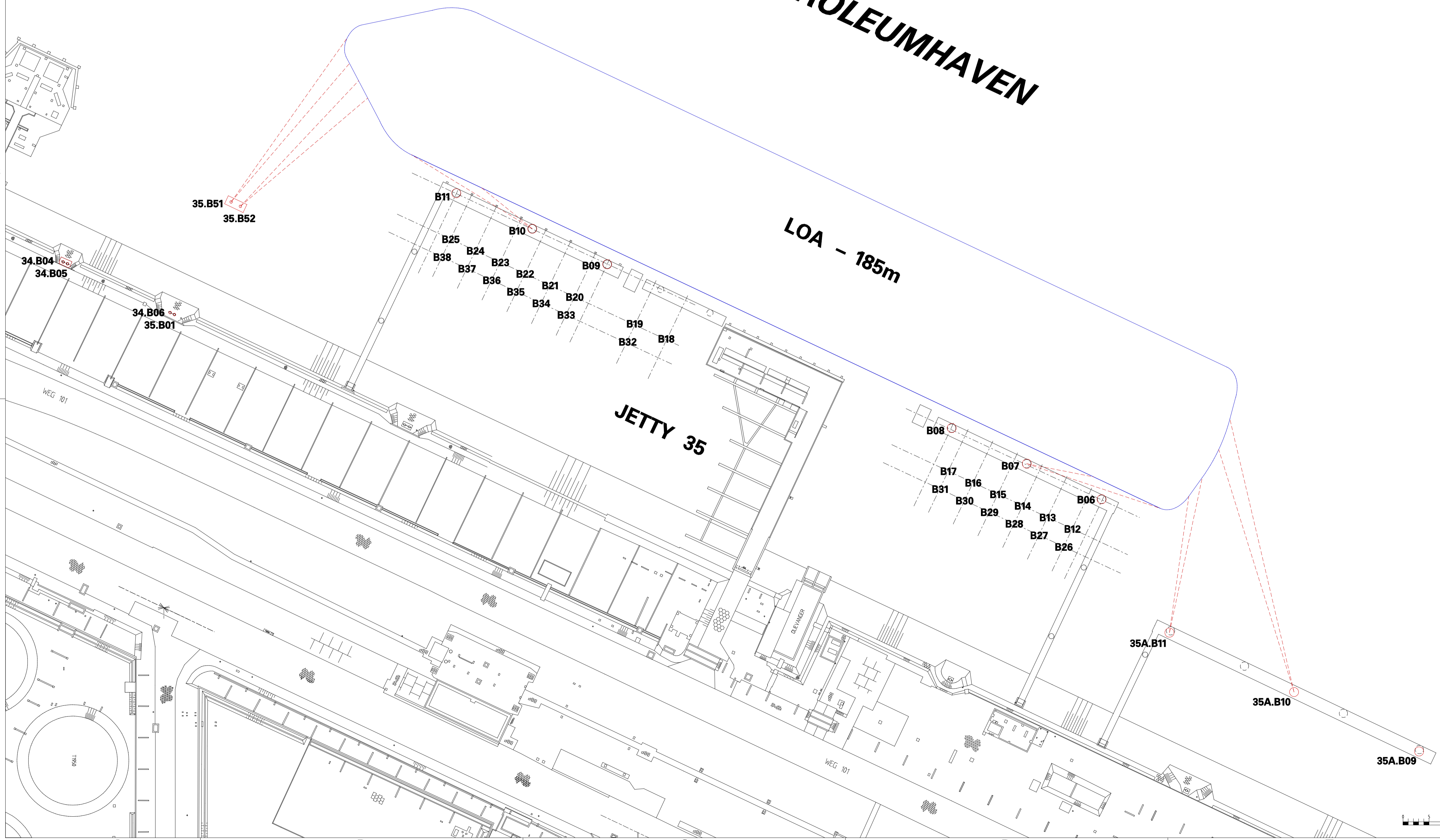
**MOORING PLAN JETTY 35
> 25,000 SDWT VESSELS**

BOLLARD	BOLLARD CAPACITY	TYPE LINE
34-B04	550 kN	BOWLINE
34-B05	550 kN	BOWLINE
34-B06	550 kN	BOWLINE
35-B01	550 kN	BOWLINE
35-B06-B11	1000 kN	
35-B12-B25	500 kN	
35-B26-B38	300 kN	
35-B51	800 kN	
35-B52	800 kN	
35A-B09	1000 kN	STERNLINE
35A-B10	1000 kN	STERNLINE
35A-B11	1000 kN	STERNLINE

TWEEDE PETROLEUMHAVEN

LOA - 185m

JETTY 35



note

rev.	date	description	bureau	A/D
F	10-09-2019	BOLDERS 35-B51 en 52 NIEUW	DMS	746
E	01-08-2016	OPNIEUW GETEKEND	DMS	746

for symbols and identifications systems
 DTP 310020 EN: vectoriaal
 DTP 310020 EN: instrumentaal
 DTP 310020 EN: elektrisch

RE	date	CVP	voort tekening
start	EPD	SCALE	A1
late	1300		
van	NIB-N19	schep	15
		REEL	NR.

**MOORING PLAN JETTY 35
FOR VESSELS OF 185m LENGTH**

reference	drawing	R-OL15000	SHEET	1	of	1	REVISE
	drawing						
	drawing						

Shell Nederland Raff./Chemie b.v.